



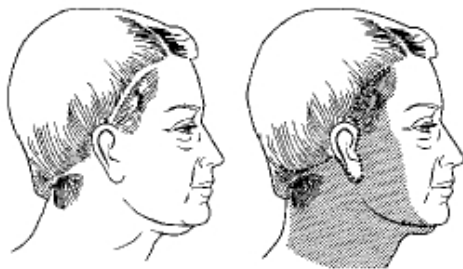
*Dana Goldberg MD*

Plastic & Reconstructive Surgery

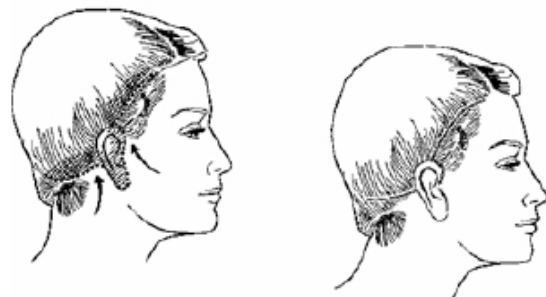
## HOME CARE AFTER RHYTIDECTOMY - FACELIFT SURGERY BEFORE SURGERY

PLEASE FOLLOW THESE INSTRUCTIONS IN ADDITION TO THOSE LISTED ON THE **GENERAL HOME CARE AFTER PLASTIC SURGERY** SHEET YOU RECEIVED.

- EXPECT BRUISING FOR 7-14 DAYS. YOU MAY ALSO NOTICE BRUISING ON YOUR NECK OR CHEST.
- KEEP YOUR HEAD ELEVATED, BY SLEEPING ON EXTRA PILLOWS, OR PREFERABLY SLEEP IN A RECLINER FOR 48-72 HOURS.
- YOU MAY WASH YOUR FACE WITH A MILD FACIAL CLEANSER.
- YOU MAY WASH YOUR HAIR WITH A GENTLE SHAMPOO.
- DO NOT HAVE PERMANENTS OR COLORING DONE UNTIL YOU DISCUSS THIS WITH YOUR DOCTOR.
- DO NOT WEAR ANY MAKEUP UNTIL 48 HOURS AFTER THE SUTURES ARE REMOVED, UNLESS OTHERWISE INSTRUCTED BY YOUR DOCTOR.
- YOUR DRESSING WILL BE REMOVED ON YOUR FIRST DOCTORS VISIT AFTER THE SURGERY. BRING A SCARF OR HAT TO WEAR HOME FROM YOUR VISIT.
- CALL YOUR DOCTORS OFFICE IF YOU NOTICE A LOT OF SWELLING ON ONE SIDE OF YOUR FACE.



**BEFORE**



**AFTER**